

WIN PRO 40 S/EW

Part number 3118173



Description

High-powered LED floodlight for indoor and outdoor, comprising:

- Die-cast aluminium housing, polyester powder coat finish ISO 9227/12944 - ISO 9223 (C5)
- Extra clear, toughened, flat glass diffuser
- High-transparency polycarbonate optics
- Anti-ageing custom moulded silicone sealing gasket(s) with resilient elastic return capacity
- Tempered glass hinged to the housing by polyester powder coat finish die-cast aluminium brackets ISO 9227/12944 - ISO 9223 (C5)
- Cable gland M20x1.5 for cables Ø 10- Ø 14 mm
- Supplied with 0,5 m pre-wired H07RN-F 3G2,5 mm² cable
- Stainless steel locking hardware
- Powder-coated steel tiltable bracket
- All WIN PRO 40 power consumption includes power unit losses
- Integral graduated goniometer for aiming purposes
- Openable and maintainable luminaire (future-proof)
- For WIN PRO 40, use only the power supply units available as accessories (ordered separately)
- IP66-rated power control gears are available in RPA, DALI and DMX-RDM. Maximum distance of 50 m cable length between control gear and luminaire (1CH)
- Standard supplied with two stainless steel brackets allowing the control gear to be fixed directly to the back of the luminaire
- The power supply groups are made up of drivers with protection against mains power surges of up to 10 kV (CM/DM)
- For up lighting installation, consult factory
- Photometric data measure according to UNI EN 13032-4 and IES LM-79-08

To maintain the regular updating of our products, PERFORMANCE iN LIGHTING reserves the right to make changes without prior notice. For the most up to date information we always recommend you read the latest version published on the website www.performanceinlighting.com. Delivered luminaire lumen outputs and power consumptions, including losses, are subject to a tolerance of +/- 7%, and unless otherwise stated the values apply to an ambient temperature of 25°C. Terms of warranty are available at www.performanceinlighting.com/qr/qr/company/terms-and-conditions

Product data

ETIM Group:	EG000027	ETIM Class:	EC001744
-------------	----------	-------------	----------

General information

Lampholder:	LED	Light source:	LED
Lightsource lumen output [lm]:	97382	Luminaire lumen output [lm]:	85140
Luminaire wattage [W]:	575 W	Luminous efficacy [lm/W]:	148
CRI:	70	Colour temperature [K]:	4000
Colour / Finishing:	GR-94 / Metallic grey / Textured	IP degree of protection:	IP66
IK-J-xxIP:	IK08 5J xx	Protection class:	I
Optic:	Symmetric Extra-Wide	Net weight [kg]:	11.339
Overall length [mm]:	585	Overall width [mm]:	520
Overall height [mm]:	180		

Mechanical features

Shape:	RECTANGULAR	Housing material:	Aluminium
Diffuser material:	GLASS	Glow wire test [°C]:	960 °C
Frontal exposed area [m ²]:	0.03	Lateral exposed area [m ²]:	0.06
Top exposed area [m ²]:	0.34		

Electrical features

Voltage type:	DC	Power factor / COS Φ:	>0.95
---------------	----	-----------------------	-------

Installation

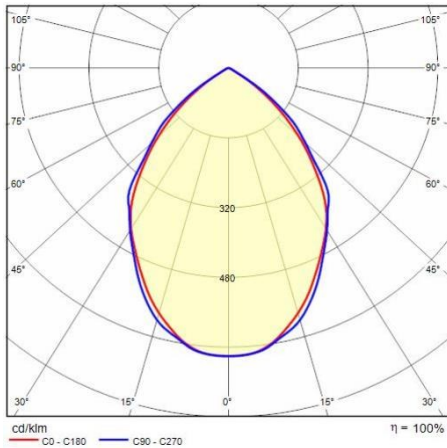
Application area:	Outdoor	Mounting type:	Floodlighting
Min. ambient temperature [°C]:	-40	Max. ambient temperature [°C]:	45
Min. distance from lighted object [m]:	1.00		

Light features

MacAdam:	3	Lumen maintenance:	L80B10@170000h
Distribution of light emission:	Direct	Luminous Intensity Class:	G'6
Zero light pollution (ULR = 0%):		IPEA* (road lighting):	A3+
IPEA* (large areas, roundabouts):	A6+	IPEA* (cycle-pedestrian):	A5+
IPEA* (green areas):	A5+	IPEA* (historic city centers):	A8+

To maintain the regular updating of our products, PERFORMANCE iN LIGHTING reserves the right to make changes without prior notice. For the most up to date information we always recommend you read the latest version published on the website www.performanceinlighting.com. Delivered luminaire lumen outputs and power consumptions, including losses, are subject to a tolerance of +/- 7%, and unless otherwise stated the values apply to an ambient temperature of 25°C. Terms of warranty are available at www.performanceinlighting.com/qr/qr/company/terms-and-conditions

Photometric data

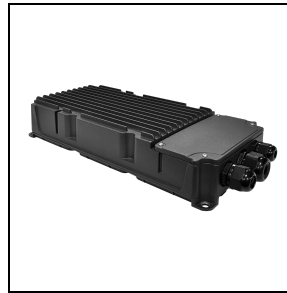


Control gear

WIN PRO 40



3118130
DRIVER BOX 600 W - 2 A - 1 CH - RPA



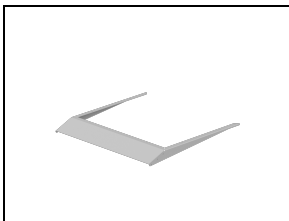
3118131
DRIVER BOX 600 W - 2 A - 1 CH - DALI



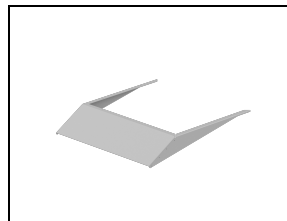
3118132
DRIVER BOX 600 W - 2 A - 1 CH - DMX

Optional accessories

WIN PRO 40



3118121
Louvre WIN PRO 40 - 5°
■ GR-94 / Metallic grey



3118182
Louvre WIN PRO 40 - 10°
■ GR-94 / Metallic grey

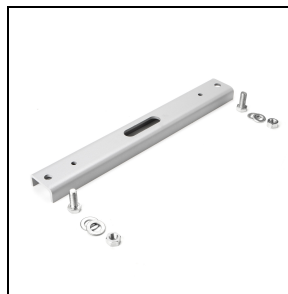
To maintain the regular updating of our products, PERFORMANCE iN LIGHTING reserves the right to make changes without prior notice. For the most up to date information we always recommend you read the latest version published on the website www.performanceinlighting.com. Delivered luminaire lumen outputs and power consumptions, including losses, are subject to a tolerance of +/- 7%, and unless otherwise stated the values apply to an ambient temperature of 25°C. Terms of warranty are available at www.performanceinlighting.com/qr/qr/company/terms-and-conditions



3115887

Connection Kit 5P Ø 8=17 mm - IP68

-9999 / -9999



3118332

Strengthening bracket. Suitable for one floodlight single point fixing M20 screw in centre of the bracket

■ GR-94 / Metallic grey